

When upgrading to Windows 10, the following steps should be taken to ensure that iDentifi scan stations, eSign and eReceipt PCs work optimally.

Windows .NET Framework Version Requirements

For iDentifi version 4.3 or lower, Windows .NET Framework 3.5 SP1 is required. For iDentifi version 4.4.1 and up, Windows NET Framework 4.5 is needed. Both versions of .NET can be installed on the same PC with no conflicts.

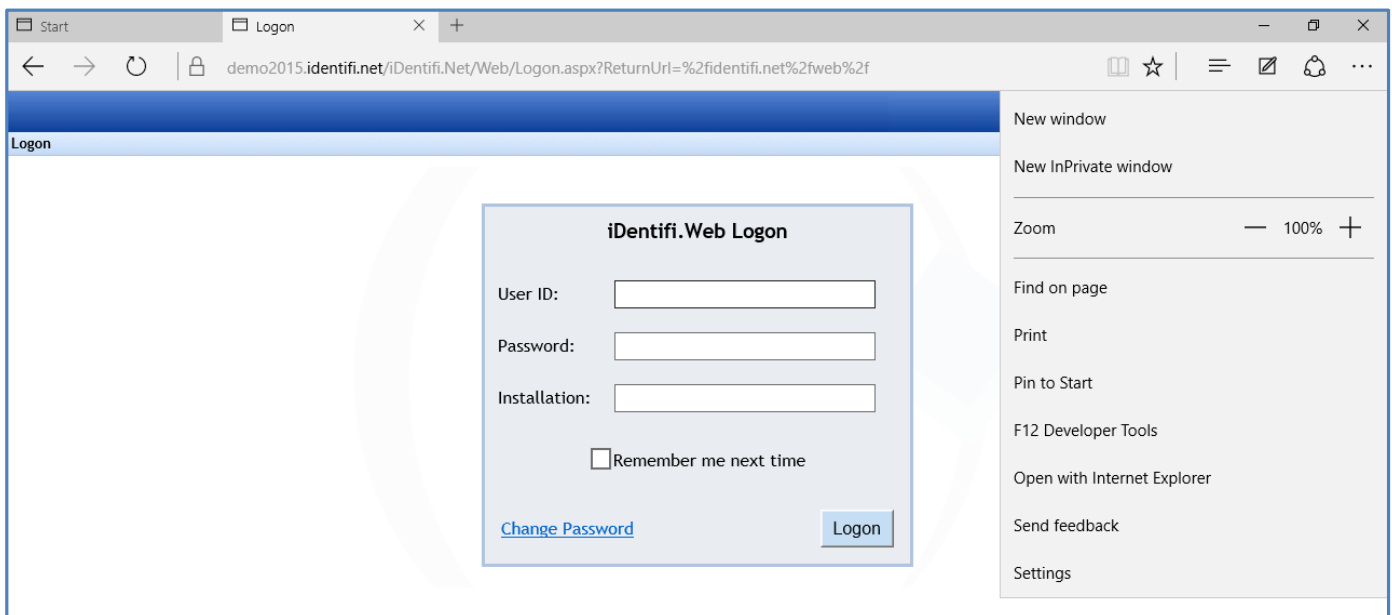
To determine which version is installed navigate to the Control Panel from the Start menu. Select *Programs and Features* and browse the list or use the search field provided.


Choose Internet Explorer To Open Your iDentifi.Net Installation's Webpage


Windows 10 installs with the Edge browser as default. iDentifi requires Internet Explorer for full functionality.

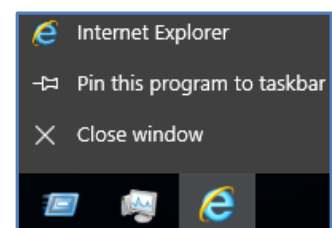
To open the page in Internet Explorer:

1. Using the  icon in the Taskbar, launch the Edge browser and enter the URL for the installation.



2. With the site open, click the  in the top right hand corner and select *Open with Internet Explorer*.
3. Internet Explorer will launch and open to the page.

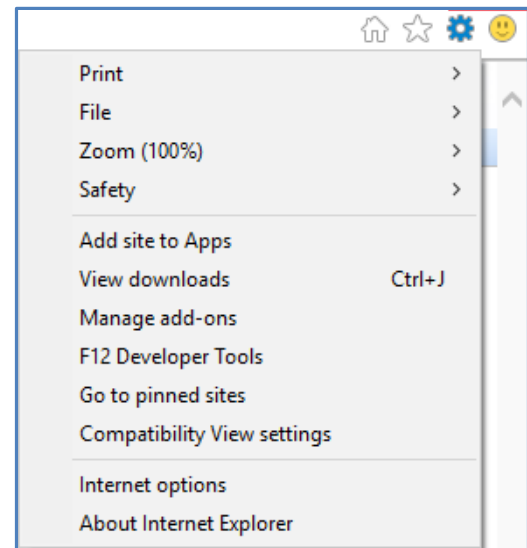
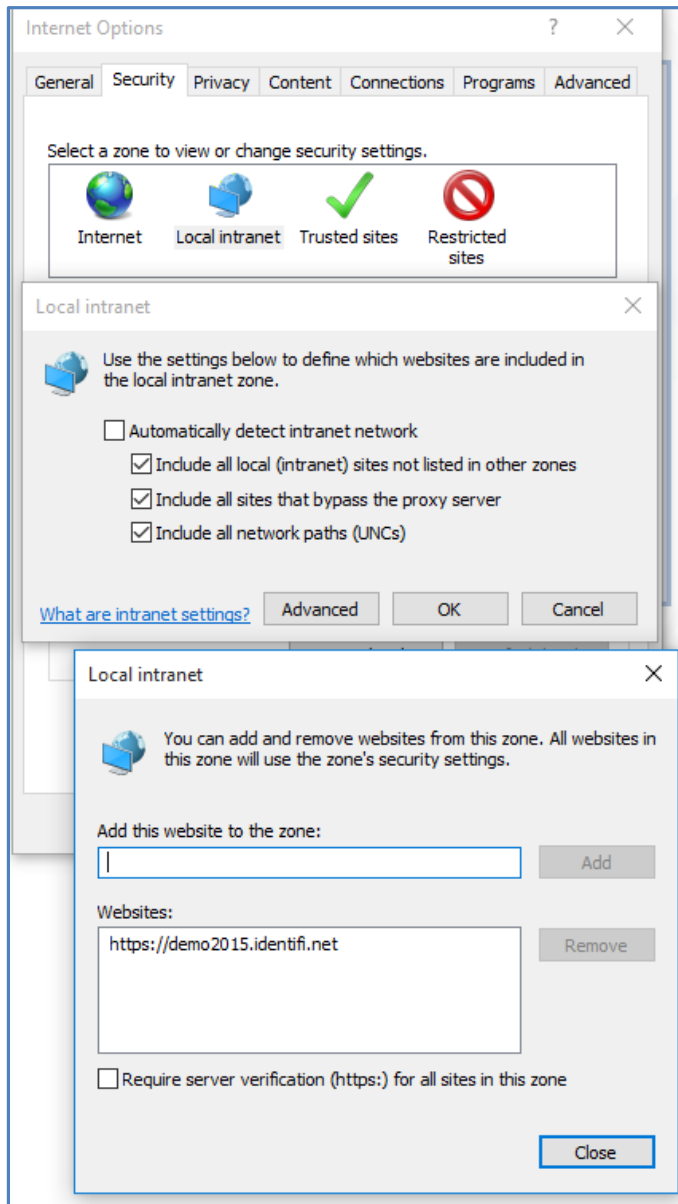
- **Best Practice:** Pin Internet Explorer to the Taskbar by right-clicking the  found in the Taskbar while the program is open, select *Pin this program to taskbar*.



After the upgrade, settings and preferences within Internet Explorer will likely need to be reset.

With the installation's site still open in Internet Explorer, access the **Tools** ⚙️ menu in top right corner and select *Internet Options*

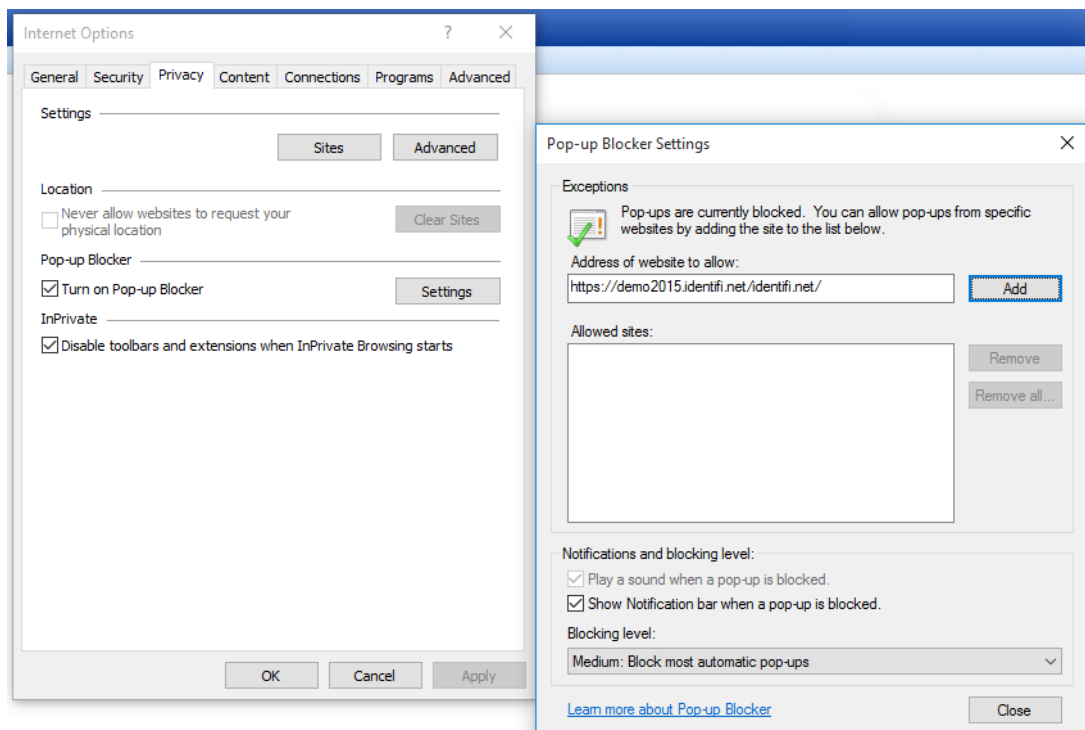
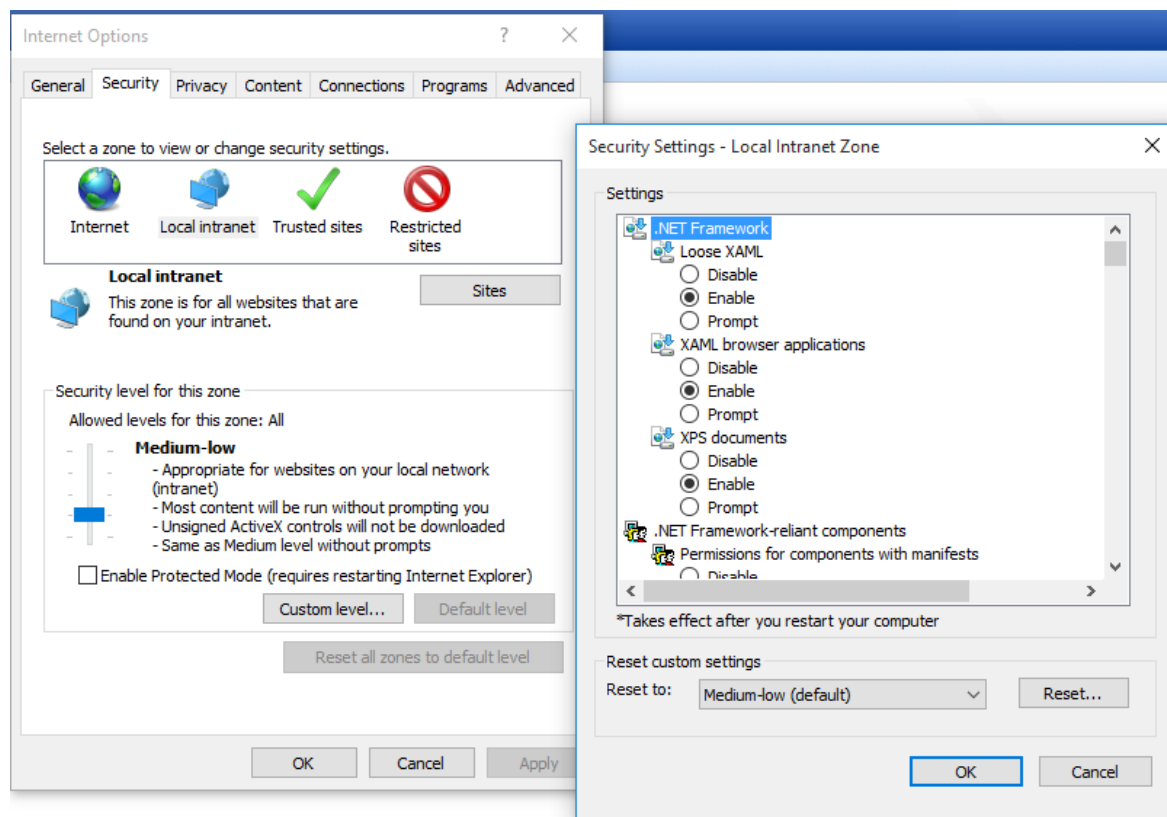
Add the Website to Local Intranet



1. Navigate to the *Security* tab.
2. Select *Local Intranet*.
3. Click *Advanced*
4. The installation's web address should appear in the *Add this website to the zone* field. Select *Add*.
5. Then click *Close*.

Set Security to Medium-Low Level

Staying under the *Security* tab, check the security level setting- it should be on *Medium-low*. If it isn't, select *Custom level...* and select it from the *Reset to:* dropdown menu and click *OK*.



Allow Pop-Ups for Your iDentifi Webpage

Select the *Privacy* tab and click on *Settings* under *Pop-up Blocker*.

Enter the URL of your iDentifi installation under *Address of website to allow* and select *Add*.

Then click *Close*.